

# Meter # 324 748 478 BCS - Enka Middle - 390 Asbury Rd, 390 Asbury Rd, Candler, NC 28715

## Shading Heatmap



## Shading by Field Segment

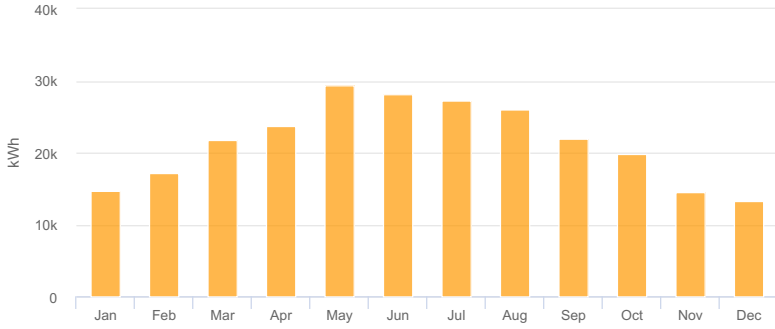
Description	Tilt	Azimuth	Modules	Nameplate	Shaded Irradiance	AC Energy	TOF <sup>2</sup>	Solar Access	Avg TSRF <sup>2</sup>
Field Segment 1	2.0°	200.7°	260	124.8 kWp	1,629.6kWh/m <sup>2</sup>	163.3 MWh <sup>1</sup>	87.7%	99.5%	87.3%
Field Segment 2	5.0°	201.5°	62	29.8 kWp	1,671.8kWh/m <sup>2</sup>	39.8 MWh <sup>1</sup>	89.6%	100.0%	89.6%
Field Segment 3	5.0°	200.9°	85	40.8 kWp	1,672.3kWh/m <sup>2</sup>	54.6 MWh <sup>1</sup>	89.6%	100.0%	89.6%
<b>Totals, weighted by kWp</b>			<b>407</b>	<b>195.4 kWp</b>	<b>1,645.0kWh/m<sup>2</sup></b>	<b>257.8 MWh</b>	<b>88.4%</b>	<b>99.7%</b>	<b>88.1%</b>

<sup>1</sup> approximate, varies based on inverter performance  
<sup>2</sup> based on location Optimal POA Irradiance of 1,866.5kWh/m<sup>2</sup> at 34.7° tilt and 180.4° azimuth

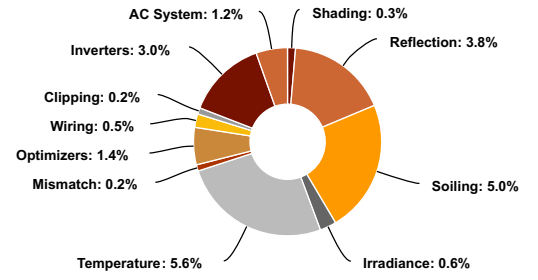
## Solar Access by Month

Description	jan	feb	mar	apr	may	jun	jul	aug	sep	oct	nov	dec
Field Segment 1	99%	99%	99%	100%	100%	100%	100%	100%	99%	99%	99%	99%
Field Segment 2	100%	100%	100%	100%	100%	100%	100%	100%	100%	100%	100%	100%
Field Segment 3	100%	100%	100%	100%	100%	100%	100%	100%	100%	100%	100%	100%
<b>Solar Access, weighted by kWp</b>	<b>99.6%</b>	<b>99.4%</b>	<b>99.5%</b>	<b>99.7%</b>	<b>99.9%</b>	<b>99.9%</b>	<b>99.8%</b>	<b>99.8%</b>	<b>99.7%</b>	<b>99.5%</b>	<b>99.6%</b>	<b>99.7%</b>
<b>AC Power (kWh)</b>	<b>14,645.9</b>	<b>17,222.9</b>	<b>21,745.2</b>	<b>23,771.6</b>	<b>29,346.5</b>	<b>28,224.0</b>	<b>27,317.4</b>	<b>26,063.1</b>	<b>21,977.4</b>	<b>19,746.7</b>	<b>14,521.6</b>	<b>13,200.8</b>

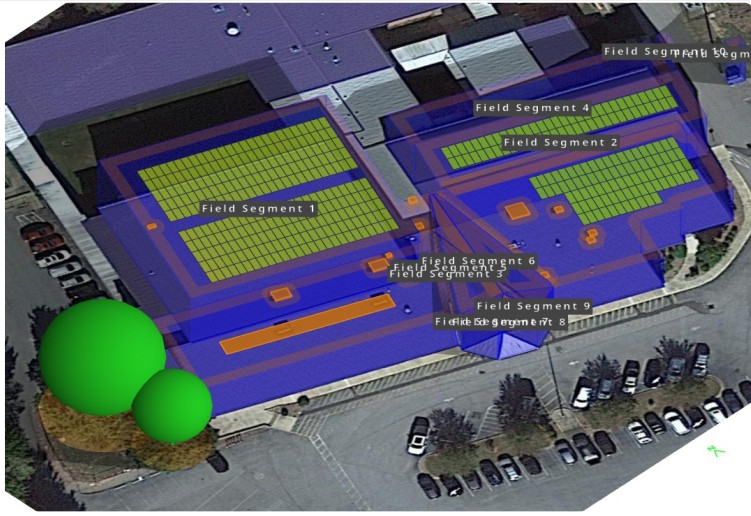
Monthly Production



Sources of System Loss



Southwestern Angle



Southeastern Angle

